



Hotel d'Inghilterra

ROMA

SMALL
LUXURY
HOTELS
OF THE WORLD
Independently owned

PREFERRED SUPPLIER OF
SIGNATURE
TRAVEL NETWORK

STARHOTELS[®]
COLLEZIONE

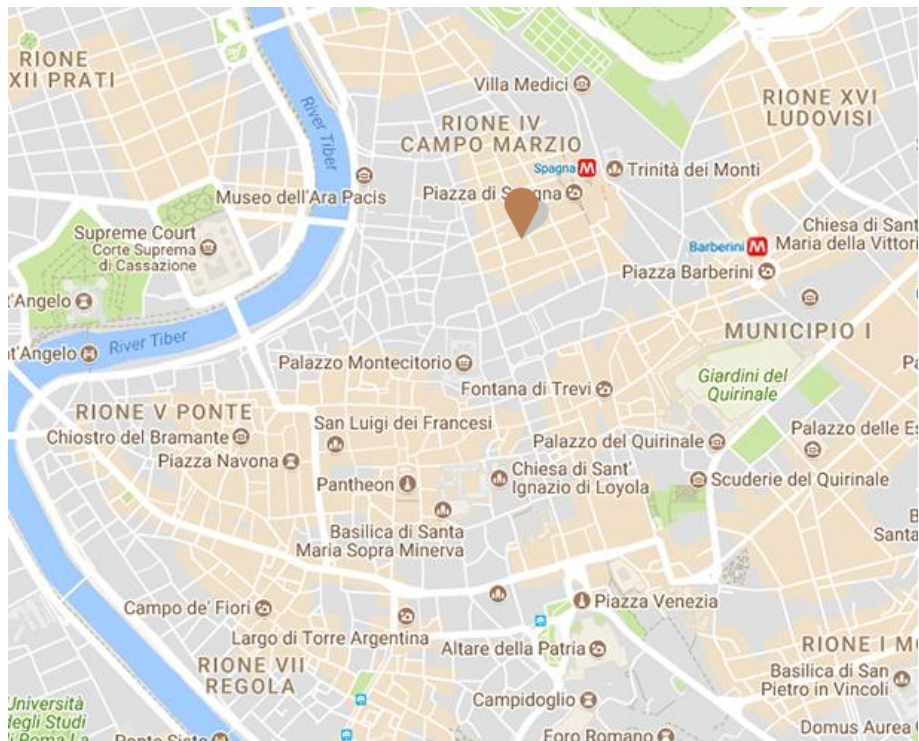


Hotel d'Inghilterra
ROMA



Destination

With its beautiful squares, gorgeous fountains, historic monuments, villas, churches and a host of other attractions, Rome is an outdoor museum whose masterpieces will amaze and captivate visitors. The “Eternal City” - a UNESCO World Heritage Site - is truly unique. The home of the Vatican, the city's ancient Roman monuments embody centuries of history and glory.



Location

A short walk from the legendary Spanish Steps and the bustle of the fashion district - Via Condotti, Via Borgognona and Via Frattina - the hotel is in an exceptional location close to Rome's greatest attractions, including the Trevi Fountain, the Roman Forum and Villa Borghese, the city's largest park.

Distances

Railway Station: Roma Termini 2 km

Airport: Ciampino 16,5 km
Fiumicino 34 km

Via Bocca di Leone 14 00187 Roma - Italy
Tel. +39 06 699811 Fax +39 06 69922243
reservations.inghilterra.rm@starhotels.it
hoteldinghilterra.com



The most iconic hotel in Rome, preferred by the international jet-set

A luxury five-star hotel nestled in the heart of Rome, Hotel d'Inghilterra exudes old-world charm and timeless elegance. With its captivating history and stunning central location, it's no wonder that this distinguished hotel continues to be the first choice for discerning guests. The building dates back to the mid-16th century and originally served as guest quarters for the noble Torlonia family, who resided in the Palazzo across the road.



Key features

- Near the Spanish Steps, convenient both for shopping and sightseeing.
- Historical building hosting a collection of antiques, furniture and artistic craft pieces.
- For over forty years the hotel has welcomed elite guests, including royals, writers, entertainers and politicians.
- The only 5-star hotel offering al fresco dining on the pedestrian street of via Borgognona, with its Café Romano restaurant.
- Penthouse with a spectacular terrace overlooking the city.
- Rooms in classic or contemporary styles appeal to all requirements and tastes.
- A unique opportunity to host events in the Palazzo Torlonia, with its magnificent ballrooms.





Elegant rooms

All the rooms and suites are decorated with their own style and personality. Each is a perfect blend of period charm and contemporary character, where refined fabrics and sumptuous furnishings complement the sober elegance of the interiors.

Number of rooms: 84

- 1 Penthouse Suite
- 3 Executive Suite
- 3 Suite
- 13 Junior Suite
- 26 Deluxe Double
- 38 Superior Double





Hotel d'Inghilterra
ROMA



Dining

Guests at Hotel d'Inghilterra can enjoy the relaxing atmosphere of the capital while comfortably seated at a table in the chic open-air dining area of the Cafè Romano restaurant, the ideal spot for brunch or for an elegant dinner to taste traditional Roman cuisine, or pamper themselves with a superb cocktail prepared by renowned mixologist Roberto Pezzuco in the classic British setting of the Bond Bar.

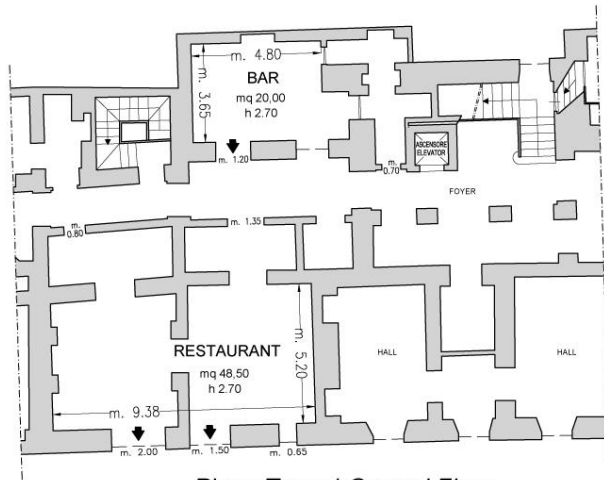


Meeting & Events

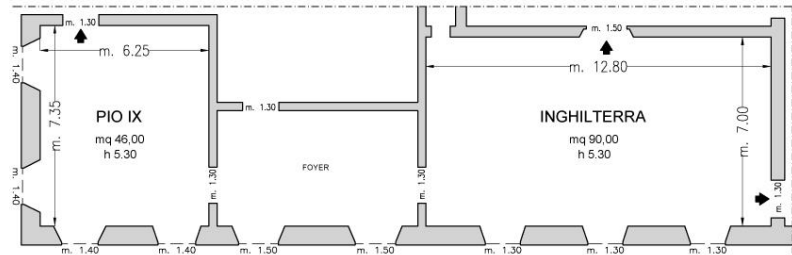
With the Penthouse Suite's spacious, scenic terrace, which can host 70 guests and offers a stunning view over the centre of Rome, and the two majestic halls of the Palazzo Torlonia opposite the hotel, the Hotel d'Inghilterra is the perfect venue for elegant parties, conferences and business meetings.



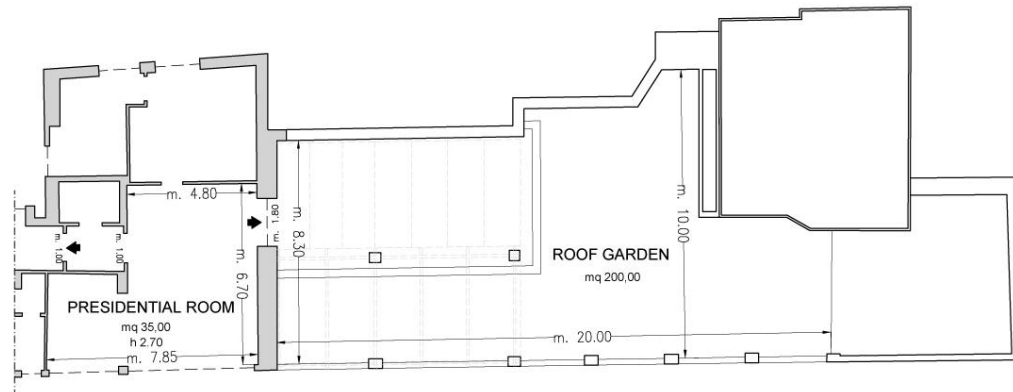
Hotel d'Inghilterra
ROMA



Piano Terra / Ground Floor



Palazzo Torlonia



Piano Sesto / Sixth Floor

◆ Uscite di sicurezza / Emergency Exits

--- Finestre / Windows

□ Colonne / Columns

Sale riunioni Meeting rooms	Area mq Area sq.ft.	Lung. x larg. mt. LxW ft.	Altezza mt. height ft.	Teatro theatre	banchi scuola [^] class room	Tavolo unico ferro di cavallo [^] conference table/U-shape	Cabaret style [^]	Cocktail reception	Banchetto [^] banquet
Sala Pio IX °	46 495,14	7,35 x 6,25 24x20,5	5,3 17,4	50	20	18	25	60	45
Salone Inghilterra °	90 968,8	12,8 x 7 42x23	5,3 17,4	70	40	40	40	150	80
Presidential room °	35 376,7	8,5 x 4 28x13,1	2,7 9	20	-	15	20	40	30
Cafè Romano Restaurant°	48,5 522	9,38 x 5,2 30,7x17	2,7 9	-	-	-	-	80	45
Roof Garden °	200 2153	10 x 20 33x65,6	-	80	-	-	-	150	80
Bond Bar°	-	-	-	-	-	-	-	20	-

° Luce Naturale / Daylight

[^] Cabaret style: preparato con tavoli da 5 sedute

[^] Banchi scuola: con 3 persone per tavolo

[^] Ferro di cavallo: con 3 persone per tavolo

[^] Banchetto: sedute per ristorazione



Hotel d'Inghilterra
ROMA

STARHOTELS®
COLLEZIONE

hoteldinghilterra.com